

# TOWN SQUARE LIVE

 Town Square LIVE

 @TownSquareLive

[SUBSCRIBE](#)

September 28, 2023

Vol. 4, Issue 39

Delaware Museum  
of Nature & Science

photo link: Delaware Museum of Nature & Science



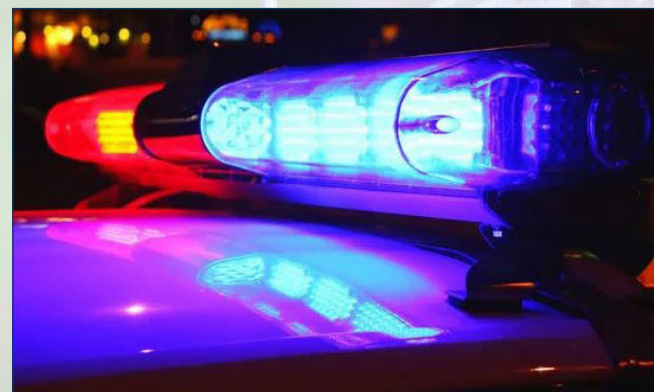
# Contents

photo link: Mt. Cuba Center

Community .....	3
Business .....	9
Food & Dining .....	12
Government .....	14
Education.....	17
Sports .....	24
Stay Connected .....	29



Grand Funk's Mark Farner to Headline Vet Fest



DE Trooper Charged with Assault



View from the Baseline



*Community*

**TOWN SQUARE LIVE**



# AWWWWWW: BABY LEMUR BORN AT BRANDYWINE ZOO

BY BETSY PRICE

A baby lemur has become the second of two babies born in recent months at Brandywine Zoo. Zoo officials are not yet sure which sex the baby is or how much it weighs and will wait until the baby is older and can leave its mother to find out. Mother and baby will not be on exhibit until sometime later in the fall.

The newborn crowned lemur was born to Sophie and Kipp, who were paired after coming to the zoo in October 2020 as part of an Association of Zoos & Aquariums [Species Survival Plan](#). This is the second

Species Survival Plan birth from a breeding pair at the zoo this summer. A Southern pudu fawn arrived in July.

The [Delaware Department of Natural Resources and Environmental Control](#), which manages the zoo, called the Brandywine lemur's birth a significant contribution to the Crowned lemur population in North America. Its birth brings the number of crowned lemurs in AZA institutions nationally to 35 and the new Delaware baby is the only one born this year.

Animals in the survival plan breeding programs are considered vulnerable species and optimally matched for genetic diversity to increase the population. Kipp was born at the Duke Lemur Center in 2016, while Sophie was born at Zoo Atlanta in 2018.

### CROWNED LEMUR BACKGROUND

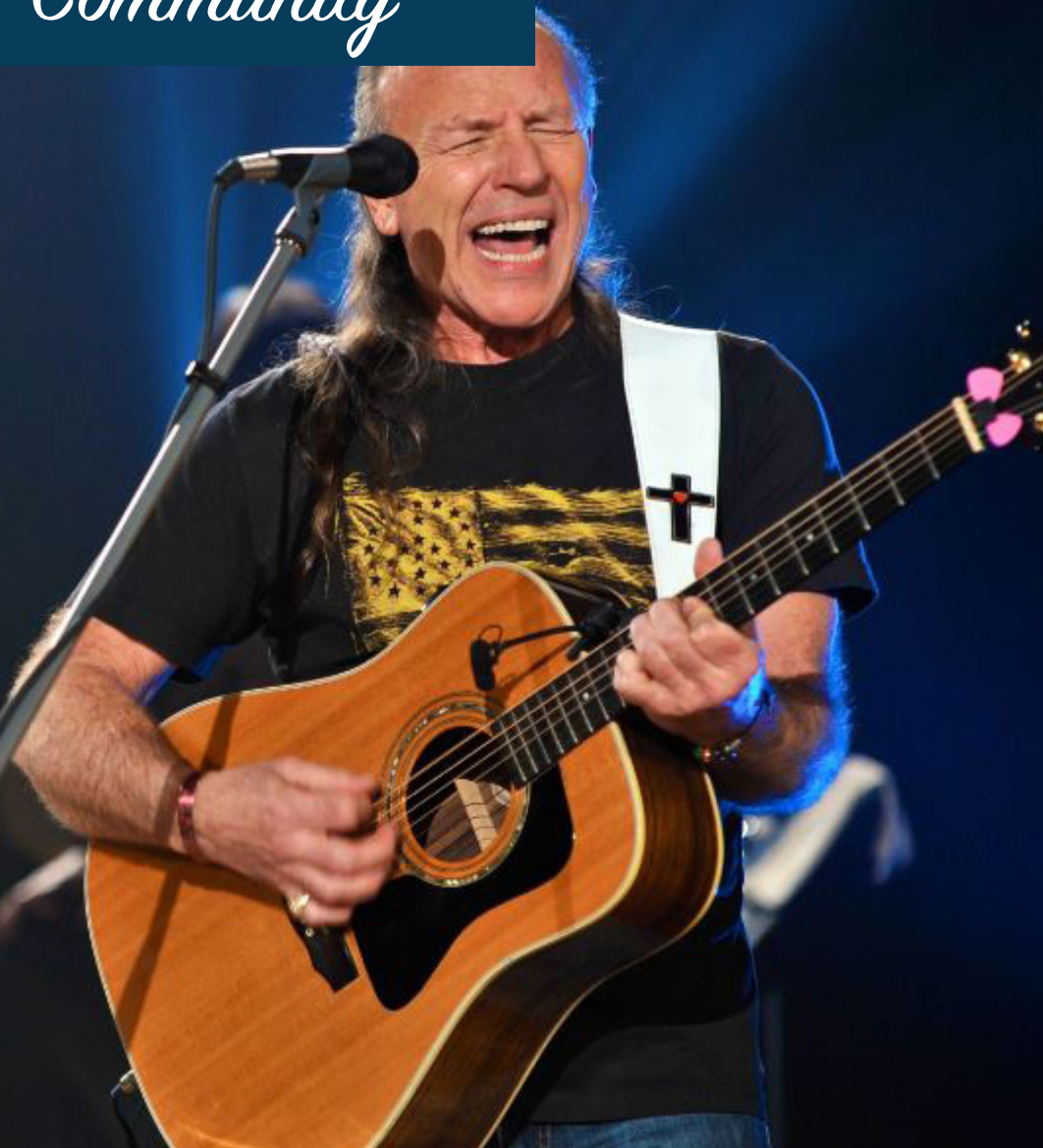
Crowned lemurs are an endangered species and their population is in decline, DNREC said. They are threatened by deforestation and habitat loss caused by other land use conversion, such as charcoal production and mining for sapphires and gold; the illegal pet trade; and hunting for bushmeat, a DNREC press release said.

The Brandywine Zoo is one of 12 North American locations where crowned lemurs can be viewed by the public. Sophie and Kipp joined two other species of lemurs—the Black and White Ruffed and Ring-Tailed lemurs—and Radiated tortoises when the Brandywine Zoo's Madagascar exhibit opened in 2020.

That new exhibit is part of the zoo's master plan, which focuses on improved animal welfare and guest experiences, species of conservation concern and the inclusion of more mixed species exhibits.

In addition to the Madagascar habitat, the master plan includes the already-completed condor viewing area, honeybee display and play area, goat barnyard experience and Animal Care Center. A name for the baby lemur will be chosen soon.





# GRAND FUNK'S MARK FARNER TO HEADLINE VET FEST

love and lift our sisters and brothers who are currently serving and those who have served our country militarily,” Farner said via email. “Because it is a genuine concern coming from genuine hearts, the positive effect is not only what we see but the intended therapeutic help we can’t see that reaches a soldier’s heart.

“Joining with people who are bringing our Veterans to the forefront and unlocking the mystery of Veterans suicide is certainly a positive endeavor. Many of us share the positive ambition it takes to make a difference and the key component to our success is witnessed in real, honest love for those who are known as the very best we have.”

Vet Fest grew out of a high school project. In 2015 Jacob DiSabatino, son of Whitehall co-founder Brian DiSabatino, created the 22in22 initiative after realizing that 22 veterans commit suicide in the U.S. each year.

Then a junior at St. Mark’s High School, Jacob raised money that went to projects that would support mental health for Veterans and members of the military. That effort bloomed into Vet Fest, which will run from 9 a.m. to 5 p.m. and include races, a parade, lunch, music and booths for military and Veteran groups.

[CLICK TO READ MORE](#)

## BY BETSY PRICE

The former lead singer and guitarist for the rock band Grand Funk Railroad will perform at a Delaware event Saturday, Sept. 30, designed to raise money to help stop suicide among soldiers. **Mark Farner** will cap the event by taking the **Vet Fest** stage at 3 p.m. with Club Phred, a popular area band, at the **town of Whitehall** near Middletown.

“VetFest is a gathering of Veterans and people who



## Good for the heart and soul

Nothing brings families together like a delicious meal.

Locally owned and operated for more than 25 years, **Kenny Family Supermarkets** are delighted to nourish our Delaware community!

[@kennyfamstores](#) [kennyfamilystores](#)



# JUNIOR LEAGUE'S WHALE OF A SALE IS BACK, BIG TIME

BY KEN MAMMARELLA

The Whale of a Sale which the Junior League of Wilmington calls Delaware's largest garage sale, will return in full size in November for the first time in four years.

"It's a little bit of work, but it's so rewarding," league president Taylor Drainer said. "We have fun hanging around with friends, and we enjoy helping parents find a good pair of shoes or a Christmas gift," she said. "They're so grateful at finding really good items at a fraction of retail."

The **next sale** runs 9 a.m. to 2 p.m. Saturday, Nov. 4, at Concord Mall. The mall has donated two empty stores—adjacent spaces once used by Hollister and Zumiez—at its southern end, so the league suggests that shoppers use the **entrance** by Bonefish Grill.

Drainer said that in years past people lined up as early as 5 a.m. to be first to find bargains and she has heard that people camped out overnight.

In 2019, the last full-fledged Whale of a Sale, netted \$23,285.25. The money raised from the sale supports the league's **mission**: advancing "women's leadership for meaningful community impact through volunteer action, collaboration and training."

It also supports Stand Up. Period., a program begun in 2019 to address "menstrual—or period—equity." It has distributed more 250,000 essential items, including tampons, pads, liners and underwear.

"A year's worth of period supplies costs the average person about \$200," the league writes. "These products aren't covered by government assistance programs like WIC or SNAP and they aren't eligible for purchase under federal flexible spending account or health savings account programs. People without adequate supplies miss out on school, work and activities."

The Wilmington league is one of the first leagues of the 291 in the Association of Junior Leagues International to establish such a program.

## HOW THE WHALE OF A SALE COMES TOGETHER

The Wilmington league has more than 300 members, Drainer said, organized into three categories: new members, active members who have been involved for one to seven years and sustaining members who "are moving on to the next chapter of their lives."

Active members are asked to donate \$150 worth of items, volunteer two shifts to help set it all up and work a half-day at the sale. New and sustaining members make donations as well and all members are encouraged to reach out to their friends and family members for items to sell. League members, plus their family members and friends, are also invited to a fundraiser preview party where they can shop. The Selfie Lab sponsored the preview party space, she said.

Since 1980, the Wilmington Whale of a Sale has run 37 sales, meaning one every year or every other year, except for the pandemic hiatus in 2020 and 2021. A mini-sale was held in 2022.

Updates to the sale, including glimpses of the merch, will be posted on its **Facebook** event page. Drainer is already excited by the 30 to 40 wedding dresses donated by Bella's Yunique Bridal Boutique, near New Castle. "They'll be \$100 or less, and they retail for thousands of dollars," she said.





# ANOTHER 'SAVE' BY NCCCO SENIOR ROLL CALL LIFELINE

BY KEN MAMMARELLA

Every morning, the New Castle County Police Senior Roll Call Lifeline calls the homes of seniors and disabled county residents. On Sept. 20, one **call** led to finding a 76-year-old woman who'd fallen and couldn't contact help. The woman, who lives in Heritage Park, off Kirkwood Highway, was sent to Christiana Hospital.

That moment was called a "save," and it averages four a year, said coordinator Jana Matthews. Although the calls are computer-generated, a live person listens in for the nuances that only a real human can grasp. "I want to hear a voice, a hello, a how are you," said Tom Martin, a volunteer for nine years and the volunteer involved in the program's latest save.

The county began the free program in 1995 and 181 county residents now subscribe. Participation requires filling out a form that ends in a legal release. The form

also asks for a lot of details about their health and their life, including things like hidden keys and garage door codes.

Matthews and Martin stressed in separate interviews how all those details are kept confidential and offline, making them "hack-proof," Martin said. All calls are made from the Sweeney Public Safety Building north of New Castle.

They also emphasized how they view their work as a "contract" with subscribers. "We want to know you're safe," Martin said.

"At this office, we are tenacious until we can find that individual," said Matthews, who began as a volunteer on the lifeline, following the volunteering of her husband, Loyal Matthews.

[CLICK TO READ MORE](#)

**BENVENUTO**  
Cigar Dinner  
EVENT  
HIGHLY RATED CIGARS BY TOBACCO FIELDS  
WILMINGTON/NEW CASTLE

**OCTOBER 13, 2023**  
5:30 P.M.  
*Special Music by Benny Rosa*

Butlered Appetizers, Raw Oyster Bar,  
Seafood Buffet, Smoked Prime Rib  
Carving Station, and more  
\$128 per person

**RESERVE YOUR TABLE TODAY**  
302.265.2652  
249 North East Front Street • Milford, DE



# SEE WINTERTHUR, ANN LOWE SHOW FOR FREE SEPT. 30

BY BETSY PRICE

Winterthur Museum, Garden & Library will open its gates for free Saturday, Sept. 30, for Discover Winterthur, a program designed to make the former du Pont estate available to everybody. In addition to being able to tour a part of the 175-room mansion or see the beautifully elegant **exhibition** “Ann Lowe” American Couturier” about the heralded Black fashion designer, the estate will offer a variety of first-come, first-served activities, including a hayride.

Children’s activities, live performances, beekeeping demonstrations and more will add to the day’s festivities on the nearly 1,000-acre former estate of Henry Francis du Pont. He was acclaimed as being one of the first to champion American antiques and crafts and used them to decorate his country home.

For the general public, the event will be from 10 a.m. to 4 p.m. Those with sensory issues may explore at their own pace from 9 a.m. until 10 a.m., when guests can expect reduced crowds and noise, quiet spaces for respite, and on-hand support from skilled and friendly volunteers.

### WINTERTHUR ACTIVITIES

On that Saturday, guests may:

- Tour a portion of the house where the du Pont family lived.
- Take a narrated tram tour of the garden.
- Let children romp through Enchanted Woods children’s garden.
- Enjoy a guided garden walk.

[CLICK TO READ MORE](#)

**CITY Fare**

**VOLUNTEERS NEEDED**  
**(302) 293-0008**

**TWO HOURS TO BRING A SMILE**

**10 MEALS WHEELS DELAWARE**



**Garrett B. Lyons D.D.S., P.A.**  
**Cosmetic & Family Dentistry**  
*Where extra is ordinary*  
**Montchanin, DE • 302.654.1765**



photo link: Longwood Gardens



*Business*

**TOWN SQUARE LIVE**



# DELAWARE SUPPLY CHAIN COMPANY TO EXPAND AT NEWARK HOME

BY BETSY PRICE

A Newark supply chain management company will use a state grant of \$155,970 to build a warehouse and fulfillment center next the headquarters of the company that spun it off. **EtailFlow LLC**, a supply chain management company designed to efficiently distribute electronic goods, grew out of Delaware-based ecommerce leader **PCOnline** earlier this year. Its new facility will be next to the parent company in Prides Crossing off Route 4.

“At EtailFlow, our core mission is to redefine the supply chain industry while leaving a meaningful impact on our community,” said Charles Zhang, chief executive officer. “We are dedicated to generating more employment prospects for our local community, ultimately infusing vitality in the Delaware economy.”

The EtailFlow facility will feature a fulfillment center; a fully customized system, including a smart warehouse; fulfillment of seller-fulfilled prime orders; fulfilled by Amazon preparation services; direct business-to-consumer orders; purchasing agent services; and return processing services.

PCOnline leadership actively searched Delaware and regional sites before deciding to buy space adjacent to its 80-employee headquarters. With additional business and projected year-over-year revenue increases of 20%, EtailFlow plans to add at least 45 jobs to its current Delaware staff of two during the next three years.

The positions will include warehouse staff, technicians, workshop operators and logistic specialists.

## SUPPLY CHAIN GENESIS

PCOnline was founded in a home garage in Newark by two University of Delaware graduate students in 2015 as an ecommerce business to resell computers on Amazon. Since then, the company has become the top Amazon reseller in the PC category and expanded onto the Walmart Marketplace and Newegg Marketplace platforms while developing relationships with most major computer manufacturers.

PCOnline revenue grew nearly 300% from 2020 to 2022, and the company received a 2022 Blue Hen 17&43 Award as the fastest-growing company led by UD alumni. It was ranked No. 3 on the 2022 Philadelphia 100 Forum 100 Fastest Growing Companies list.

As part of that growth, the company expanded from its focus on ecommerce to providing supply chain services. In 2023, those services—distribution, logistics and warehousing—were spun off from PCOnline and became EtailFlow.

“EtailFlow LLC’s expansion in Delaware is a testament to PCOnline’s commitment to growth and innovation,” said New Castle County Executive Matt Meyer. “As they set their sights on new horizons, they exemplify the spirit of entrepreneurship and the opportunities that are here in the First State.”

The **Delaware Prosperity Partnership** supported EtailFlow’s request to the Council on Development Finance for the Jobs Performance Grant up to \$155,970 from the Delaware Strategic Fund. Distribution of these grants is dependent upon the company meeting certain commitments.



**REOPENING IN SEPTEMBER!**

# EDGE

## COMPETITION



Compete for grant funding through our bi-annual EDGE (Encouraging Development, Growth & Expansion) initiative. It's an ideal way to help your Delaware small business level the playing field.

### STEM

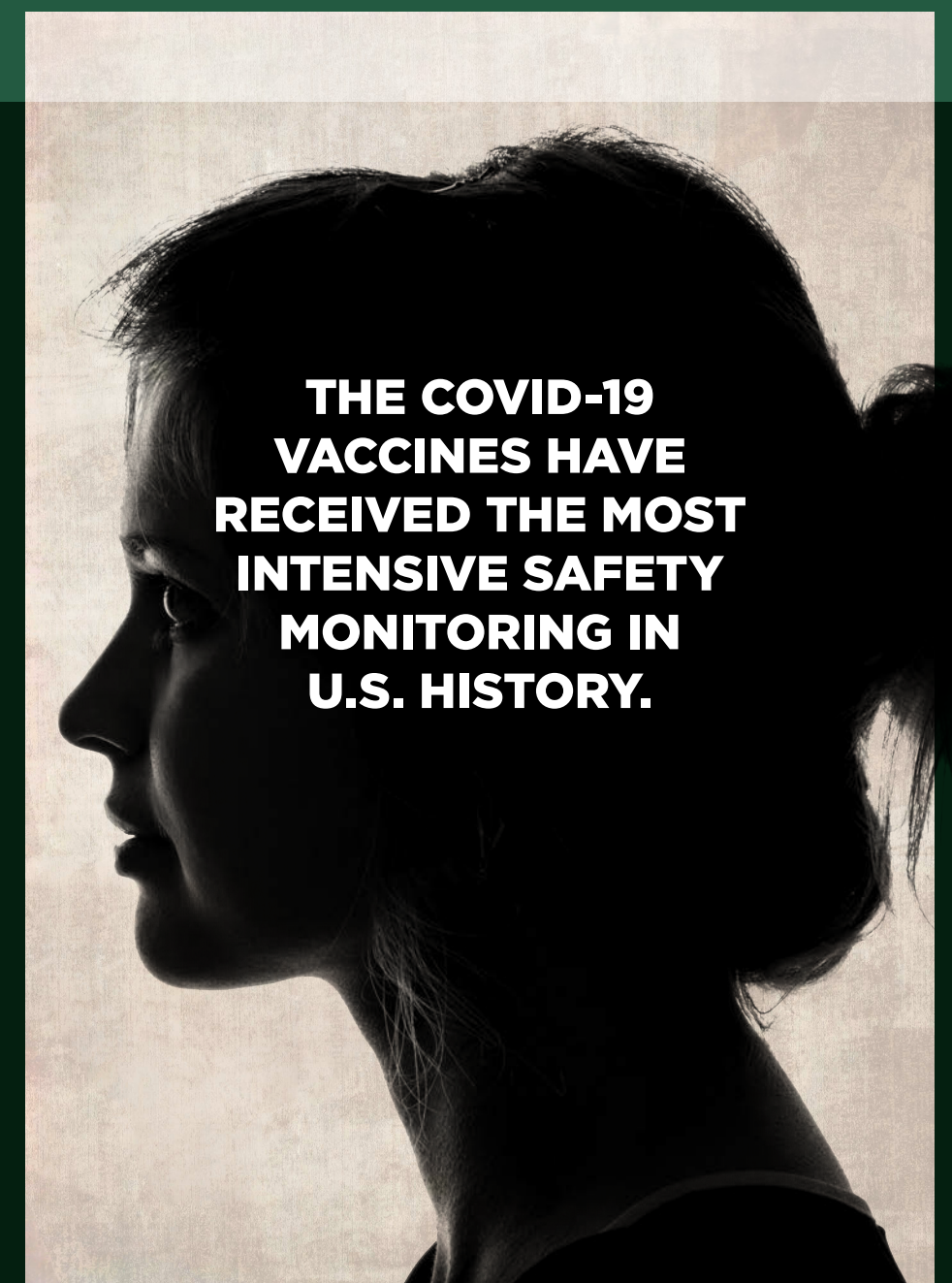


### ENTREPRENEUR



LEARN MORE ABOUT THE EDGE GRANT COMPETITION AT:

**DE.GOV/EDGE**



**THE COVID-19 VACCINES HAVE RECEIVED THE MOST INTENSIVE SAFETY MONITORING IN U.S. HISTORY.**

**COVID-19 IS STILL HERE. SO IS THE VACCINE. If you're worried about the vaccine, you're not alone. But the facts don't lie.**

 [de.gov/covidvaccine](https://de.gov/covidvaccine)



photo by Engin Akyurt / Pexels



# *Food & Dining*

TOWN SQUARE LIVE



## A CHEF SHAKEUP. A NEW BRANDYWINE RESTAURANT. A LOOK AT OLD FAVES

BY PAM GEORGE

Manisha Collet-Govinden, the opening chef at [Bar Reverie](#) in Greenville, is no longer at the restaurant. Owner David Dietz had “moved mountains” to bring the family to Delaware. (They previously owned a restaurant in Paris.) But ultimately, it was not a good fit. The new chef, Steve Taplin, started Sept. 17 after working on new dishes at Dietz’s [BBC Tavern and Grill](#) next door. He previously worked at the Union League in Philadelphia and at Manufacturers Golf & Country Club in Fort Washington, PA.

However, Taplin is no stranger to Wilmington. He went to Salesianum High School and his parents live in Hockessin, Dietz says.

Look for a new fall menu with Taplin’s imprint. Bar Reverie is open for coffee and pastries, lunch and dinner.

### COMING SOON

Bill Irvin, an owner of [Snuff Mill Restaurant, Butchery & Wine Bar](#), plans to open The Brandywine Restaurant in late October. The seasoned restaurateur was inspired more by the posh department store eateries of his youth than the shuttered Brandywine Room in the [Hotel du Pont](#) and the décor proves his point. The intimate space near [Santa Fe Mexican Grill](#) boasts elegant Japanese wallpaper with cranes, antique mirrors, a barrel-vaulted ceiling and an underlit bar. Stay tuned.

### WILMINGTON BLACK RESTAURANT WEEK

More than 25 restaurants are participating in [Wilmington Black Restaurant Week](#), hosted by the Wilmington City Council and the Office of Economic Development. The list includes Justin Womack’s [Oath ’84](#),

which opened on 405 King St. in 2022 and is moving to 902 N. Market St. this year.

The week culminated on Sept. 23, from noon to 5 p.m., with a food truck event at the Wilmington HBCU Week Block Party. (HBCU stands for historically black colleges and universities.) The event was at 10th and Orange streets near [DE.CO](#).

### MINH’S BISTRO CLOSES

[Minh’s Bistro](#), a Vietnamese restaurant on Route 1 near Rehoboth, announced its closing on Sept. 19. Owner Thinkh Pham said he wanted to spend more time with family. The restaurant opened in 2017 to great applause. It specializes in pho, the Vietnamese soup that eats like a meal. The space near [Rosenfeld’s Jewish Delicatessen](#) won’t be vacant for long. The Secret Sauce Thai Kitchen is moving into the small shopping center.

### OLDIES BUT GOODIES

This week, I had the opportunity to visit two Delaware favorites that I haven’t frequented in some time.

The first, [Eden](#) in Rehoboth Beach, has achieved culinary icon status. It initially opened as a café on Rehoboth Avenue but later moved to the short-lived home of Pizza by Elizabeths on Baltimore Avenue. The café morphed into a two-story fine-dining destination with fanciful food and a fairy-like décor that appealed to Mark Hunker and best friend Jeff McCracken, who purchased the restaurant in 2005. (They also own JAM Bistro.)

Antelope tenderloin has been an intriguing menu mainstay, and the blushing pink meat is as good as it looks. Kurobuta pork tomahawk is another winner, and the bone is as long as a pot handle.

[CLICK TO READ MORE](#)

photo link: Town of Middletown, DE



*Government*

**TOWN SQUARE LIVE**



# CONSORTIUM: EXPAND PROGRAM GIVING PREGNANT WOMEN \$1,000 A MONTH

BY BETSY PRICE

A pilot program that gave 40 pregnant New Castle County women \$1,000 a month for 24 months had greater than expected health and other benefits, the sponsors said.

The program saw a 324% return on investment, organizers said at a press conference announcing the result.

Among its outcomes:

- \$229,520 in reduced hospital stays
- \$21,600 in reduced emergency department visits
- 50% of the monthly stipend went directly toward groceries/food, household items/basic needs, and gas/auto/transportation; 30% of which went directly to groceries/food
- 89% of the participating moms received prenatal care
- 81% of their babies had no complications at birth

Expanding the Guaranteed Basic Income program could help reduce both infant and maternal deaths,

while helping women take better care of themselves and their children, said Delaware House Majority Leader Melissa Minor-Brown, R, New Castle.

“At this time, we are focused on sharing the strong results of this pilot with our partners and the public in the hopes that we can all advocate for supporting sustainability of the program,” Minor-Brown said. “The ultimate goal would be a continuation and expansion of the GBI program throughout Delaware.”

The program was a project of the **Delaware Healthy Mother and Infant Consortium**, which was created as successor to the Infant Mortality Task Force.

The consortium was tasked with preventing infant and maternal mortality as well as improving the health outcomes of infants and women of childbearing age throughout Delaware.

[CLICK TO READ MORE](#)

# Hagley Craft Fair

AND SPECIALTY FOOD MARKET

CELEBRATING 45 YEARS WITH LOCAL ARTISANS!



**OCTOBER 21 & 22, 2023**

SATURDAY 10-5 • SUNDAY 10-4

Featuring jewelry, textiles, glass, wood, pottery, & more!

[WWW.HAGLEY.ORG/CRAFT](http://WWW.HAGLEY.ORG/CRAFT)



**LEARN MORE**



# DELAWARE TROOPER CHARGED WITH ASSAULTING, INJURING TWO TEENS

BY BETSY PRICE

A Delaware State Trooper has been **charged** with two felonies, including Delaware’s first use of a Deprivation of Civil Rights statute, for punching a teenager and fracturing his orbital socket in response to an apparent prank. Trooper Dempsey Walters, 29, is suspended without pay and was indicted Monday on six counts:

- Deprivation of Civil Rights, a Class B Felony, for depriving victim two of his constitutional rights under color of law and causing serious physical injury
- Assault 2nd Degree, a Class D Felony, for causing serious physical injury to victim two
- Two counts of Assault 3rd Degree, a Class A Misdemeanor, for intentionally causing injury to victims one and two
- Two counts of Official Misconduct, a Class A Misdemeanor, for committing an unauthorized exercise of official function against victims one and two

A press release detailing the case includes video from the events of Aug. 21.

Four days earlier, Walters was off duty and returning to his home in Elsmere’s Lancaster Village when he made contact with a 17-year-old minor described as victim one. The two argued and Walters contacted the Elsmere Police Department. Two officers responded and took victim one, who was not arrested, to his home on Taft Avenue. The next day, Walters looked up the juvenile on the Delaware Criminal Justice Information System, which only law enforcement and court officials can use.

On Aug. 21, Walters was on duty when a 15-year-old minor referred to as victim two, and three friends—none of whom were victim one—were walking past Walters’ residence. Victim two and his friends decided to play a prank: He ran up to Walters’ house and, covering his face, kicked the door and ran off. Walters’ girlfriend called Walters, gave him a description of victim two, and told him that the youths had run off.

[CLICK TO READ MORE](#)

The advertisement features the Candlelight Theatre logo at the top left, which consists of a colorful starburst and the text "the Candlelight theatre". Below the logo is a marquee-style sign with a red border and gold lights, displaying the title "INTO THE WOODS" in a stylized font. A red ribbon banner below the marquee indicates the dates "Sept 16 - Oct 29". At the bottom of the advertisement, there are three small images: a glass of wine, a plate of food, and a bottle of Rye whiskey. Below these images is the phone number "302-475-2313" and the website "www.candlelighttheatredelaware.org".



photo credit: William Penn High School

# WILLIAM PENN HIGH SCHOOL

WELCOME TO  
**NATION**

COLONIAL  
**ION**

Safe Proud

Respectful Responsible

Safe Proud

Responsible Respectful

*Education*

**TOWN SQUARE LIVE**



# RECRUITING SEASON HERE AS PRIVATE SCHOOLS HOLD OPEN HOUSES

BY JAREK RUTZ

Wilmington’s Ursuline Academy will be showcasing its innovation, design-thinking, entrepreneurship and acceleration studio to prospective families at its open house Sunday. It’s one of many open houses that private schools hold each fall to show off their curriculums, students and facilities while answering questions from parents and potential students who may be interested in attending.

“Families get to really see every aspect of the school with attention really directed towards their specific questions and interests,” said Valerie White, director of enrollment at Ursuline. “It’s a chance for families to get the whole picture of what happens here.”

Also offering open houses this weekend are Salesianum School, an all-male Catholic institution in Wilmington, and Sanford School, a coed college prep in Hockessin.

Melissa Brown, director of admissions and financial aid at Wilmington Friends, said the Quaker school

wants families to get a good feel for the program it offers and the community it is. “We’ll have current parents and students, in addition to the typical faculty and staff that are there, to talk about their experiences and how we might be a match for prospective families,” she said.

Ursuline’s new studio, referred to as the I.D.E.A. Studio, is under construction and expected to open in the winter. It will be used by students in the middle and upper schools and will give them hands-on experience in various fields, including computer science, finance, engineering, entrepreneurship and business.

“We’re even going to have a student-run cafe, a little coffee shop that the students are going to be running,” said White. “It’s really a state-of-the-art facility that we’re getting ready to launch here in January.”

The school also will show off its new Dream Lab, which will be utilized by the lower school.

[CLICK TO READ MORE](#)

**GBC** 1886 **Goldey-Beacom COLLEGE**

## NEW GRADUATE CERTIFICATE PROGRAMS

- Certificate in Marketing
- Certificate in Human Resource Management
- Certificate in Health Care Management
- Certificate in Entrepreneurship
- Certificate in Information Technology

**LOCATION** | **CONTACT** | **WEBSITE**

4701 Limestone Road  
Wilmington, DE 19808

302-225-6248  
Admissions@gbc.edu

www.gbc.edu/

# BAN OF ANIME CLUB, MANGA DRAWS IRE FROM MAGNOLIA MIDDLE PARENTS

BY JAREK RUTZ

Many in the **Magnolia Middle School** community are upset about a recent ban on manga and the termination of the anime club. A **petition** with nearly 2,000 signatures is circulating, asking the school, which is part of the **Caesar Rodney School District**, to reinstate the club and allow manga books.

Manga are comics or graphic novels originating from Japan and anime is a style of Japanese film and television animation that dates back to the early 1900s. Both boomed in the 1990s in the United States, have become part of the Comic.Con and Cosplay cultures and continue to be popular with today's students, Generation Y and Generation Z. Among the most popular anime movies are animated films by Hayao Miyazaki such as "Spirited Away" and "Howl's Moving Castle" that were hailed by Disney and Pixar for their stories and beauty.

Although the petition is circulating, Mike Williams, district community relations specialist, said the district is still in the process of making a final decision, which should be made next week.

"The district is in the process of reviewing policies, looking over curriculum materials, and the after school activities and things like that, and we still have maybe a week or 10 days to get through all that," he said. "We're going to look at each of the publications or books that are in this library and see which ones meet and which ones don't meet the standard for age-appropriate material."

He said the club wasn't technically terminated by the district, but the club sponsor, Gretchen Fox, a teacher at Magnolia, decided to end the club on her own.

"The manga books are not banned, either, but what has been brought to the attention of the school is that some of the materials might not be age appropriate," he said. "So the principal decided he's going to use a criteria and say age appropriate is this, and age non appropriate is that."

According to Williams, Fox then said she didn't have anything that she can use for her club because everything fell into the non-approved area, which is why the club was suspended.

[CLICK TO READ MORE](#)



**URSULINE**

**October 1 Upper School Open House**  
**November 4 & 5 US Scholarship Admissions Test**  
**November 10 Lower & Middle School Open House**

Upper School Shadow Days in October, November, & December  
 Mark your calendar & register today! Private tours also available.




**New School Year.**  
**New Teacher.**  
**New Chance to Learn.**

*Ask Your Child's Teacher:*  
 How can you and I ensure that my child is academically successful?



# Education

# NUMBERS SHOW GAPS IN TEST SCORES, MONEY SPENT ON STUDENTS

**BY JAREK RUTZ**

The amount of money spent on Delaware students in 2022 varied widely from school to school and can't be correlated with results on standard tests. The average per student expenditure for the top 10 performers on the Smarter Balanced Assessment—taken by students in third through eighth grade—is \$17,894. It's \$11,489 for the schools that did best on the Scholastic Aptitude Test (SAT), which is taken by all of Delaware's juniors.

The highest allocation for a top-performing school is Dover Air Force Base Middle School, at \$38,314 per student—a clear outlier. If you throw out that school, then the average of the others is \$15,482. The lowest allocation is for MOT Charter School, at \$12,177 per student.

Repeated attempts were unsuccessful to ask Caesar Rodney School District about the large expenditure per student at the air base middle school, which has no low-income students according to state records.

The average per student expenditure for the bottom performing schools on the Smarter Balanced Assessment is \$24,500, and \$20,052 for the bottom perform-

ing SAT schools. The highest allocation for a bottom-performing school is for Richardson Park Elementary School, at \$31,818 per student. The lowest allocation is for Laurel Senior High School, at \$13,903 per student.

The amount of money spent on students can't be correlated with scores on the Smart Balanced Assessment or the Scholastic Aptitude Test, educators say. Dan Shelton, superintendent of **Christina School District**, the second largest district in the state behind Red Clay Consolidated, questions if there is a connection between the two.

“As far as a correlation between money spent on schools and test scores, I'm not sure that is the correct way to look at it in terms of are we getting enough back on our investment,” he said. “I'm not certain we have ever seen a correlation between money spent and test scores directly.” What has been seen, he said, is a correlation between the needs of students and test scores.

“In other words, students who have experienced more ACES [adverse childhood experiences] tend to not score as well on standardized tests,” he said. “The services we provide to these students would drive up funding needs for those schools, which is why we sometimes call them high-needs schools.”

But critics also wonder: What are students getting for the annual expenditures that seem to rise year after year while proficiency rates and test scores are not?

Analysis of the cost-per-student in single-digit profi-

ciency schools is important, informative and impactful, said Julia Keleher, executive director of **First State Educate**, a local education advocacy group.

“It allows the public to ask important questions about how funds are allocated and spent,” she said. “It also prompts public inquiry into the return on investment, in terms of improved outcomes, for these expenditures.”

Across the state, the average spent on students in 2022 was \$18,604 per student. Additional funds for schools and students come from a variety of federal and state programs based on socioeconomic issues for a school, such as poverty or the need for special education.

For example, schools that have a higher population of low-income students, students with disabilities, or English language learners will get supplemental money to help address those social issues that schools who do not have that demographic makeup might not get. Throughout the state, 25.21% of students are low income, 17.47% of students have disabilities and 59.52% are of ethnic and racial minorities.

According to **Delaware Code**, disabilities can include: attention-deficit disorders, autism, developmental delay, deaf-blind, emotional disability, hearing impairment, specific learning disability, intellectual disability, orthopedic impairment, other health impairment, speech/language impairment, traumatic brain injury and visual impairment.

[CLICK TO READ MORE](#)

# GOLDEY-BEACOM ADDS ESPORTS, CYBER SECURITY DEGREE PROGRAMS

BY JAREK RUTZ

Wilmington’s Goldey-Beacom College has launched three new undergraduate degree programs focused on marketing and the hot, hot, hot areas of gaming and cybersecurity, continuing the college’s expansion of degree options. The **Delaware Department of Education** officially approved the following programs, which will start this year:

- Bachelor of Science in Digital Marketing
- Bachelor of Science in Business Administration with a concentration in eSports & Gaming Administration
- Bachelor of Science in Business Administration with a concentration in Cybersecurity.

The new programs piggyback onto last year’s rollout of two new degrees at Goldey-Beacom: a Bachelor of Arts in Interdisciplinary Studies and a Bachelor of Science in Business Administration with a concentration in Business Analytics.

Also last fall, the college began offering five new undergraduate certificate programs including marketing, human resource management, health care management, entrepreneurship and information technology.

Adding Cybersecurity and eSports Management & Gaming Administration at the undergraduate level aligns with the goal of ensuring our students have the knowledge and skills they need, said Joel Worden, vice president for academic affairs and provost at Goldey-Beacom.

“We continue to focus on sharpening our tech offerings, recognizing that the speed with which technology advances means our classrooms need to help students develop skills,” he said, “but more importantly, these courses will challenge students to think and understand deeply.”

With the three new degrees, Goldey-Beacom now offers a total of 48 degree options in its graduate and



undergraduate programs.

### *Bachelor of Science in Digital Marketing*

This program will provide students with foundation skills in business with a focus on marketing, with the goal of combining traditional approaches to market planning strategies with modern digital marketing and data analytics.

Students will develop expertise in the areas of market research, sales and distribution management, advertising, international marketing, analytics and digital marketing.

When combined with the communications, quantitative and interpersonal skills developed in the liberal arts and business courses, this curriculum prepares students to assume a wide range of careers in marketing and business.

[CLICK TO READ MORE](#)

# LEARNING COLLABORATIVE ESTABLISHES TIMELINE OF PLANNING YEAR

BY JAREK RUTZ

The **Wilmington Learning Collaborative** seems to have more focus and direction, with a timeline and five-phase approach to its 2023-2024 planning year unveiled this week. The collaborative’s Tuesday night meeting was the first led by its newly hired executive director, Laura Burgos.

The collaborative is a state agency created in November 2022 to improve the educational and societal outcomes for children in nine city elementary schools across Brandywine, Red Clay and Christina school districts. By giving families a voice in policy making, it hopes to empower city residents and combat challenges like low test scores, graduation rates and high absenteeism, as well as improving other achievement metrics.

The collaborative also hopes to connect families with social services to address issues such as homelessness, poverty and hunger that can affect education. The agency has \$10 million to spend courtesy of the state budget.

Here’s the timeline of the planning year, as discussed in Tuesday’s meeting:

**October:**

- Program budget
- Contracts with partners
- Recruitment

Both the operational budget and budget for school programs are expected to be voted on and approved in the council’s Oct. 17 meeting. Burgos said that gives the council time to further assess the needs of schools and be accurate in creating programs that will work.

“This cannot be guesswork,” Burgos said. “We need to be fiscally responsible and anticipate what we’re going to need throughout the year.”

The council is working with partners **Delaware State University** on a \$160,000 contract and **Empower Schools** on a \$140,000 contract. Both groups will help with project management.



**“**  
**We saw a boost in website referrals from Delaware LIVE during our admission season.**  
**”**  
 - URSULINE ACADEMY

DSU is expected to focus on four main areas: project design, strategic advising, technical assistance and implementation. Empower Schools, which has worked in 10 different states, is expected to help with governance systems, landscape analysis, liaison development, board support and more.

“Both have been here since the onset of this journey,” Burgos said. “I want to be very clear around creating a scope of work for our partnership for the remainder of this academic year.”

The last key element of October is recruitment of four essential roles: a senior administrative assistant, a director of operations, a director of educator pathways and a director of instructional infrastructure.

[CLICK TO READ MORE](#)

PAUL M. HODGSON  
VOCATIONAL - TECHNICAL SCHOOL

# NCCVT SEEKS \$11.3 MILLION FOR HODGSON HIGH PROJECTS

BY JAREK RUTZ

**New Castle County Vocational Technical School District** is seeking \$11,346,774.30 over the next two years to put towards one of the district's four schools. In the district's board meeting Monday night, two certificates of necessity were approved for submission for **Hodgson Vocational Technical High School**.

Certificates of necessity are funding requests by districts, usually for capital projects and deferred maintenance that districts lack the local funds to complete. Sometimes, the certificate of necessity includes a smaller percentage of local share that must be voted by district residents through a referendum. Certificates include reasons why they need the money and must be approved by the state.

## EXPANSION OF HODGSON BUILDING

The first ask includes a state share of \$2,620,258.51 in fiscal year 2025 and \$1,179,116.33 in fiscal year 2026 and is for expanding Hodgson's career and technical education program, which provides technical and on-hands

training preparing students for a specific trade or career. The money will go towards architect/engineering costs, audit fees, construction costs and construction contingency. Essentially, the district is trying to expand the current building to accommodate the number of students.

"The current building lacks sufficient academic and support spaces necessary to support a 1,200 student high school," the certificate states. "Major life safety and code deficiencies are present and the building is in such poor condition it is in need of a complete replacement."

Although Hodgson houses 1,200 students, the calculated capacity for the building is 900 students. The district's student placement is based upon program-specific offerings at each of the four vo-tech schools, therefore enrollment is set based on capacity of each school. With the limit on current seats available, increasing capacity will help to alleviate burdens of other district schools, the certificate states.

The funding will follow a 62%-state, 38%-local split, meaning the local share, paid for by the taxes of district residents, would be \$2,328,649.09 over the next two years.

If the certificate is approved by the state, the expansion project is expected to be completed in either late 2026 or early 2027, and will grow the building's capacity to 1,500 students.

## HODGSON ATHLETIC FIELDHOUSE

The second project the district is requesting funding is for \$5,218,750.39, which will be 100% locally-funded. It includes \$3,599,138.20 in fiscal year 2025 and \$1,619,612.19 in fiscal year 2026.

The financial need ties directly to the expansion of the school, which will necessitate a new location for Hodgson's athletic fields. The district wants to build a replacement fieldhouse, which will include new locker rooms and restrooms at the relocated ballfields.



photo credit: Ben Fulton



*Sports*

TOWN SQUARE LIVE



# ON THE PITCH: WEEK 3 BOYS' SOCCER TOP 10 RANKINGS

BY JASON WINCHELL

Last week saw a lot of great action and for Sallies, it was quite a long week with lots of traveling. The Sals jumped up to the sixth spot in the national rankings then defeated No.2 Wilmington Charter on Tuesday. Then they flew to Vegas on Wednesday and played on Thursday and Saturday before flying back on Sunday.

## DIVISION 1

**No. 1 Sallies (5-0-1)** (LW No. 1) The Sals picked up a couple of big wins last week including the 2-0 win vs. No. 2 Wilmington Charter and a 2-1 win over a team from Vegas. Also came back from two goals down to earn a 3-3 tie against Faith Lutheran (NV). The Sals travel to The Graveyard for their annual Holy War game against Saint Mark's Thursday night..

**No. 2 Wilmington Charter (3-1)** (LW No. 2) The Force picked up a conference win over Conrad 4-2 last week and lost a tough one to Sallies 2-0.. They travelled to No. 1 Caravel on Tuesday before hosting St. Elizabeth's Friday.

**No. 3 Cape Henlopen (3-0)** (LW No. 5) The Vikings picked up a pair of huge wins over ranked teams 5-1 over No. 6 Polytech and a 1-0 over No. 4 Appoquinimink. They travelled to Laurel on Tuesday before heading to North Carolina for a pair of games this weekend.

**No. 4 Delcastle (4-0-1)** (LW No. 3) The Cougars went 2-0-1 last week including a 0-0 tie against Appoquinimink and a 3-2 win against No. 4 Friends. They are at DMA Tuesday, host Odessa on Thursday and travel to Dover on Saturday.

**No. 5 Appoquinimink (0-2-2)** (LW No. 4) The Jags had a tough week against two top ranked teams with a 0-0 draw against Delcastle and a 1-0 loss at Cape Henlopen. The Jags travel to William Penn on Thursday.

**No. 6 Milford (5-0)** (LW 9) The Bucs picked up a pair of wins last week 3-2 over Dover and 4-2 over Woodbridge. They travelled to Sussex Academy on Tuesday in their only game this week.

**No. 7 Sussex Central (3-1-1)** (LW No. 7) The Golden Knights won a pair of games last week against Sussex Tech and Worcester Prep (MD). They hosted Delmar on Tuesday before traveling to Smyrna on Thursday.

**No. 8 St. Georges Tech (3-0)** (LW No. 8) The Hawks picked up a pair of conference wins over Mount Pleasant and Odessa. The Hawks have not allowed a goal so far this year and will have three matches this week, Tuesday home vs. Brandywine, Thursday home vs. Newark and Saturday at DMA.

**No. 9 Newark (4-0)** (LW Unranked) The Yellow Jackets picked up a huge 4-3 win over Odessa last week. They have a busy week as they hosted Conrad on Tuesday and travel to St. Georges on Thursday.

**No. 10 Polytech (4-2)** (LW No. 6) The Panthers lost to two ranked teams last week. They travelled to Seaford on Tuesday and host Sussex Tech on Thursday.

## DIVISION 2

**No. 1 Caravel (3-1)** (LW No. 1) The Bucs defeated St. Andrew's 5-1 last week. They hosted No. 2 Wilmington Charter on Tuesday night.

**No. 2 Sussex Academy (5-0)** (LW No. 5) The Seahawks continued their hot start with a pair of wins last week 2-1 over Delmar and 3-0 over Polytech. They hosted Milford on Tuesday night before traveling to Seaford on Thursday .

**No. 3 Indian River (3-0-1)** (LW No. 3) The Indians picked up a win over Laurel 1-0. They hosted Caesar Rodney on Tuesday night and then they travel to Claymont to face Archmere on Friday.

[CLICK TO READ MORE](#)



# THE CORNER SCOOP: WEEK 3 FIELD HOCKEY TOP 10

BY NICK HALLIDAY

Week three brought the matchup we had all been waiting for, the top teams in the Henlopen North and Henlopen South, as the undefeated Delmar Wildcats visited the undefeated Smyrna Eagles on Tuesday. Both were state champs in their respective divisions last season. I suspect these two will play for the Henlopen Conference title at the end of October. Other teams to keep your eye on this week are Cape Henlopen, Milford, Polytech, Newark Charter and Caravel.

*Game of the Week:* D2 Delmar at D1 Smyrna Tuesday Sept. 26 4 p.m. Here are the current top 10 teams:

### DIVISION 1

**No. 1 Smyrna 4-0** After the Eagles flew over the Cape Vikings, it set their next biggest matchup with D1 state champs Delmar. No one has tamed the Wildcats in years so while the task is daunting the Eagles are up for the challenge. Tuesday vs. Delmar, Thursday at Sussex

Central.

**No. 2 Cape Henlopen 5-1** Cape picked up two more shutout wins this week with their only loss to Smyrna. Next up at Indian River Tuesday and home against No.3 Milford Thursday, for the Morgan’s Message Game. Morgan’s Message strives to eliminate the stigma surrounding mental health within the student-athlete community and equalize the treatment of physical and mental health in athletics.

**No. 3 Milford 5-0** The Bucs battled at Sussex Academy to remain undefeated. They faced Woodbridge at home on Tuesday and will be tested again when they go to Cape Henlopen Thursday at Champions Stadium under the lights (6 p.m. start for Morgan’s Message Game).

[CLICK TO READ MORE](#)

# ARDEN CONCERT GILD

PROUDLY PRESENTS



— LIVE AT ARDEN GILD HALL —  
**SAT. OCTOBER 7, 2023**

— 8:00 PM - \$58 GENERAL / \$53 MEMBERS —  
 2126 THE HIGHWAY - ARDEN, DELAWARE 19810

TICKETS: [ARDENCONCERTS.COM](http://ARDENCONCERTS.COM)



## VIEW FROM THE BASELINE: WEEK 3 TOP 10 RANKINGS

BY JASON WINCHELL

The big news of the week comes from Delaware Military Academy and it has nothing to do with the Seahawks' play on the court. Unfortunately, an equipment malfunction has wreaked havoc with the team's season. DMA athletics director Jeremy Jeanne did not respond to an email or text message seeking details, but the court cannot be used until the net and posts are repaired. Several scheduled home games have been moved to the opponents' courts, starting with Appoquinimink on Wednesday night. DMA will now travel to Middletown for that one.

As of Sunday night, their next two after that were still scheduled as home matches, set for Oct. 2 and 3.

Moving to the Independent Conference, two teams are making noise. Wilmington Friends is 3-1. The Quakers faced perhaps their toughest foe to date on Tuesday at home against 5-1 Concord. The Raiders, along with

Dickinson, are the favorites in Blue Hen Flight B. And out in Hockessin, the Sanford Warriors are 3-2 as they pursue their first winning season since 2015. That year was also the last time they made the state tournament, reaching the second round. They were swept at Dover on Sept. 22, but all three sets were close. Sanford's coach is Padua Academy graduate Sarah Cushing; among her assistants are her Padua classmate and fellow Sanford teacher, Rachel Liszkiewicz and Ursuline alumna Alicia Papa. The Warriors are led by hitters Reagan Metz and Caroline Boyle, setter Lillianna Cooper and libero Caroline Moore.

Matches to watch this week: Saint Mark's at Ursuline, Tuesday, 6 p.m.; Caesar Rodney at Dover, Thursday, 5:30 p.m.; Padua at Ursuline, Thursday, 6 p.m.; Appoquinimink at Middletown, Friday, 6 p.m.

**No. 1 Smyrna** remains in the top spot after pulling out a win at Caesar Rodney last week. The Eagles lost the first two sets before rallying for a five-set win. They visited Delmar on Tuesday before heading home to meet Sussex Central Thursday.

**No. 2 Saint Mark's** is making a strong case to be ranked No. 1. They'll have to play well on the road this week against No. 4 Ursuline, the Spartans are getting contributions from everyone on the roster. They'll play their next five on the road, culminating with a showdown at Smyrna on Oct. 10.

**No. 3 Archmere** has put together four straight wins and looked solid in a sweep at Ursuline last week. One of the things that stands out about this group of Auks is the defense they are playing. Getting the ball down against the Auks is proving to be very difficult.

**No. 4 Ursuline** sticks in the fourth spot despite losing a match last week. The Raiders fell to Archmere before knocking off Delmarva Christian in four sets. Ursuline will be tested severely this week, with home matches against Catholic rivals Saint Mark's and Padua before a trip to Lewes to meet Cape Henlopen.

**No. 5 Newark Charter** moves up a spot after a week that included two home wins over solid opponents. The Patriots needed four sets against Delaware Military and Caesar Rodney, but they got the "W" in the end. Only one match awaits Newark Charter this week. It's at Conrad and if you go, take some canned goods for the food drive.

[CLICK TO READ MORE](#)

# ST. MARK'S SPARTANS HOLD RED LIONS SCORELESS



BY NICK HALLIDAY

The Spartans' defense rebounded in a big win over Red Lion after giving up 30 points to Archmere last week. Each time the Lions threatened, the Spartans stood their ground. They clogged up holes, forced a fumble, sacked the quarterback and prevented the Lions from picking up any big plays during the game. The Spartans were able to keep the Lions scoreless with a 29-0 victory.

The St. Mark's offense continued to produce after a stellar performance last week in which they scored 34 points. Junior quarterback James Campbell led the offense for the Spartans throwing two touchdowns while running for one. He connected on two of those touchdowns with his brother Jude Campbell on 23 yard and 19 yard passes.

James then scampered in on a QB keeper early in the second quarter from two yards out. Logan Klein scored the final touchdown late in the fourth quarter for the Spartans on a five-yard run. James finished the game with 119 passing yards on the night to go with his two touchdowns. His brother Jude had 47 receiving yards and two touchdowns. The rushing attack was led by Keigan Barnes who amassed 88 yards in the game.

Red Lion did have a touchdown called back in the first quarter on a penalty. Evan Budinger threw for 144 yards while Mehki Corbin rushed for 72 yards. Xavier Moore led the Red Lions defensively with six tackles and two sacks.



BASED IN WILMINGTON, DELAWARE

2 KEYNOTES & 5 WORKSHOPS | GENIUS BAR, AFTER PARTY RESOURCES, & NETWORKING | \$10,000+ PITCH COMPETITION

MISTRESS OF CEREMONIES MICHELLE WASHINGTON WOMEN OF M.O.R.E. | KEYNOTE MELINDA F. EMERSON AUTHOR & SMALLBIZLADY | KEYNOTE AMY JOHNSTON COO AT EDDY

DELAWARE ENTREPRENEURIAL SUMMIT

★★★★★ "OUTSTANDING" PAST ATTENDEE | 11:00 A.M. TO 6:30 P.M. | SEPTEMBER 27 2023 | PENN CINEMA WILMINGTON RIVERFRONT | "INSPIRING" PAST ATTENDEE

PRESENTED BY SAUL EWING

THE EMERGING ENTERPRISE CENTER IS PROUD TO PRESENT OUR 6TH ANNUAL DELAWARE ENTREPRENEURIAL SUMMIT ON SEPTEMBER 27. THIS YEAR'S SUMMIT WILL BE AT PENN CINEMA WITH FIVE WORKSHOPS, TWO KEYNOTES, GENIUS BAR, AFTER PARTY, AND WILL CULMINATE WITH THE 11TH ANNUAL SWIM WITH THE SHARKS PITCH COMPETITION.

Yes2Health

A free community health outreach program

NEW GROUPS START IN SEPTEMBER!

Registration is required to receive meeting details and materials. [Join for free!](#)

This program is brought to you by the Delaware Breast Cancer Coalition with generous support from:

MID-DEL FOUNDATION | LIONS CLUB INTERNATIONAL | DELAWARE BREAST CANCER COALITION | SUSSEX COUNTY DELAWARE

# Stay Connected

**TOWN SQUARE LIVE IS  
YOUR SOURCE FOR NEWS  
AND INFORMATION IN  
THE NEW CASTLE AREA  
OF DELAWARE. STAY  
CONNECTED WITH US BY  
PHONE, EMAIL OR  
SOCIAL MEDIA BY  
CLICKING ON THE LINKS.**



**PHONE: 302-542-9231**



**For News & Information: [NEWS@DELAWARELIVE.COM](mailto:NEWS@DELAWARELIVE.COM)  
To Advertise With Us: [SHUPE@DELAWARELIVE.COM](mailto:SHUPE@DELAWARELIVE.COM)**



**[instagram.com/townsquaredelaware/](https://www.instagram.com/townsquaredelaware/)**



**[twitter.com/townsquarede](https://twitter.com/townsquarede)**



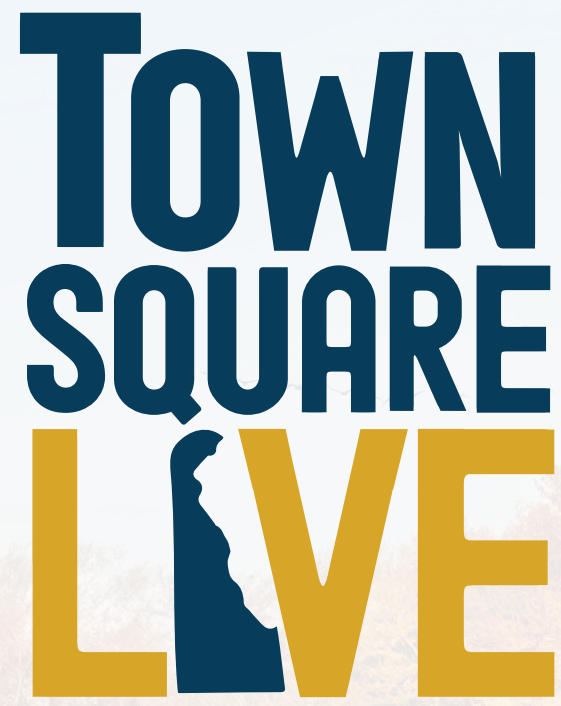
**[facebook.com/townsquarelive/](https://www.facebook.com/townsquarelive/)**



**Watch Delaware Live on YouTube!**



**[linkedin.com/company/delaware-live-news](https://www.linkedin.com/company/delaware-live-news)**



 Town Square LIVE  @TownSquareLive

Without these collaborators,  
this outlet would not be  
possible:

Bryan Shupe, CEO

Betsy Price, Editor

Sonja M. Frey, Publisher

*John Mollura Photography*

# *Design your 2023 through Intentional Business and Marketing Planning*

As a locally-owned company, Delaware LIVE News takes pride in working alongside regional businesses to develop digital marketing campaigns, through our daily news platforms.

From large corporations like Christiana Care, Delaware Tech Community College, and Delaware Department of Health to small shops like Fur Baby Pet Resort, Dolce Coffee Shop, and Benvenuto Tuscan Restaurant, we customize each plan to optimize the needs of each of our marketing partners.

I would love the opportunity to meet with you for 10-15 minutes to see how we can help. You can click the link to set up a meeting with me in our virtual office: <https://meetings.hubspot.com/shupe1>

*CEO, Bryan Shupe / 302-542-9231 / shupe@delawarelive.com*

